

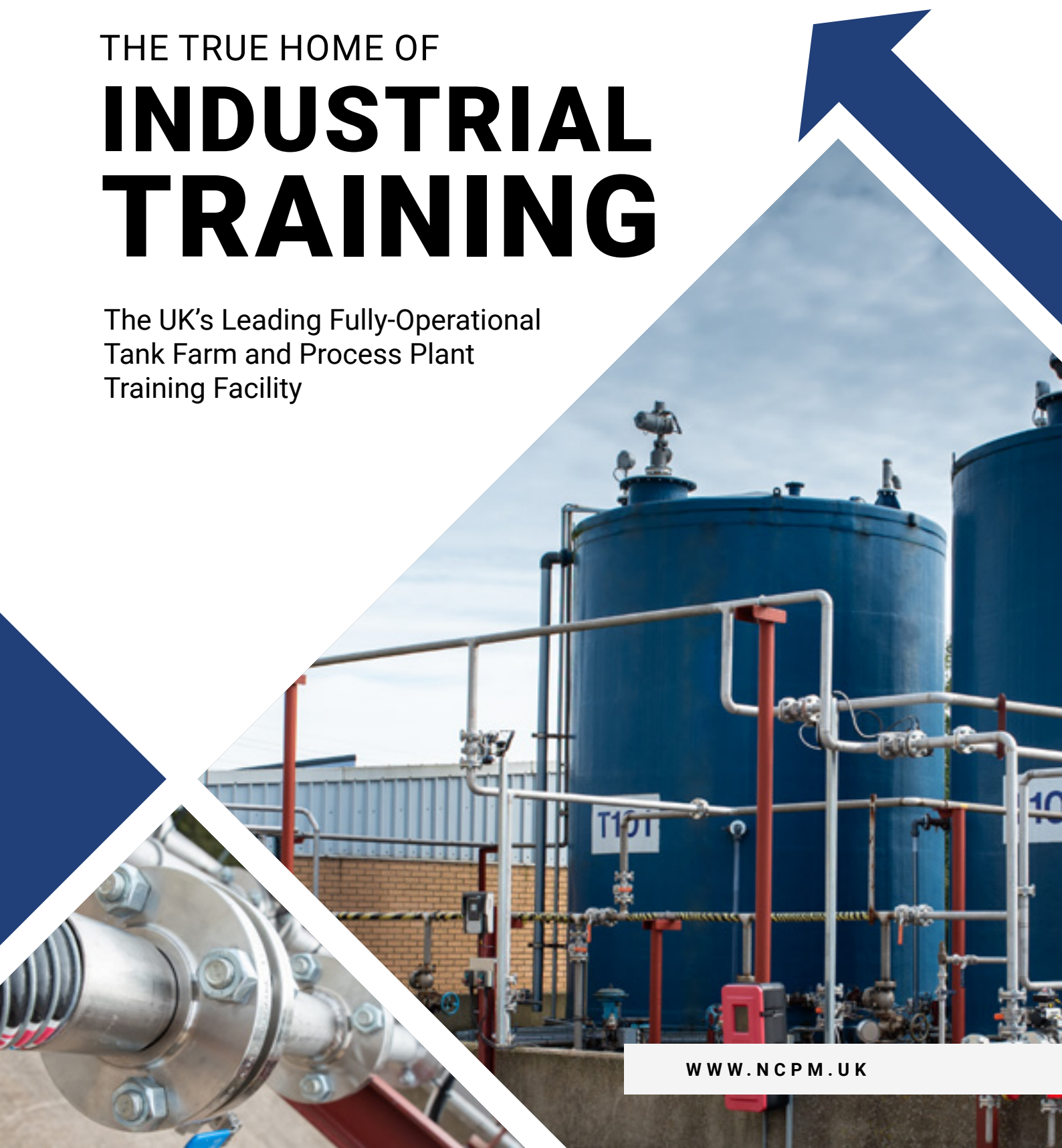


NATIONAL CENTRE FOR PROCESS & MANUFACTURING

THE TRUE HOME OF

INDUSTRIAL TRAINING

The UK's Leading Fully-Operational
Tank Farm and Process Plant
Training Facility



WWW.NCPM.UK

The National Centre for Process & Manufacturing

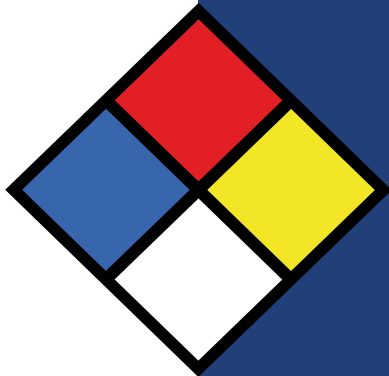
REAL WORLD TRAINING, REAL WORLD EXPERIENCE

The NCPM has been delivered through a strategic partnership between Reynolds Training Services and CATCH. By bringing together the expertise of both training providers, we have created the UK's first fully-operational tank farm and process plant training facility - further enhancing the real world immersive training experience at the CATCH facility.

The new state-of-the-art centre brings real world experience to our joint provision, giving us the ability to train and practice core Control Room, Process and Field Operations in a realistic work environment.

Our cutting-edge equipment and controls align directly with industries both in the UK and internationally.

The NCPM, based at CATCH, was realised due to a £250,000 investment from Reynolds Training Services and supported with a £195,000 grant from the Government Local Growth Fund, secured by the Humber LEP as part of the Government's commitment to the Northern Powerhouse.



Your Brochure Sitemap

REAL WORLD WORKFLOW	4-5
MAP OF THE NCPM	6-7
TANK FARM	8-13
PROCESS BUILDING	14-19
OPERATIONAL CONTROL CENTRE	20-23
DISTRIBUTION CONTROL SYSTEMS	24-25
SIMULATOR SUITE	26-27
COURSES	28-29
APPRENTICESHIPS	30-31
BUSINESS SECTORS	32-33
FACILITIES AT CATCH	34-35
THE NCPM AT A GLANCE	36-37
WHERE ARE WE HEADING NEXT?	38-39
CONTACT DETAILS	40



Key

- THE NCPM
- TANK FARM
- PROCESS BUILDING
- OPERATIONS
- SIMULATOR SUITE
- COURSES
- BUSINESS SECTORS
- ABOUT THE NCPM

WE CAN BRING INTO THE
NCPM
ANY SCENARIO
TO REFLECT ANY
REAL WORLD
INDUSTRY
SITUATION.

DAVID TALBOT
CATCH

PROCESSING BETTER SAFETY TRAINING FOR:



HIGH HAZARD
SITES



MANAGERS &
OPERATORS



INDIVIDUAL
LEARNERS



UK & GLOBAL
BUSINESSES



JOHN REYNOLDS
REYNOLDS TRAINING SERVICES



DAVID TALBOT
CATCH

BRINGING TRAINING TO LIFE FOR THE PROCESS INDUSTRIES

REAL WORLD WORKFLOW

At the NCPM, we offer advanced safety and technical training for careers across operations, maintenance, control & instrumentation, process and occupational safety, management and quality control.

Within the NCPM, our instructors help businesses and learners build knowledge, skills and experience relevant to their site, industry and sector.

Our Tank Farm and Process Building offer a real time, real world emulated environment for transferring, processing and storing bulk liquids. Whilst, our Receipt and Discharge Point provides an array of delivery methods allowing the import

of raw material into any of our tanks, through a range of pipelines.

As part of the receipt process, material can be metered, filtered, stored and transferred into the Process Building for processing. It can then be transferred back to any tank in our Tank Farm and, ultimately, exported to a waiting vehicle, or ship, or via pipeline.

That's real time operation, emulating the whole process life-cycle from raw material to finished product.

WWW.NCPM.UK





SET YOUR SITES
ON SAFETY
AND TECHNICAL
EXCELLENCE

THE NCPM FROM ABOVE



TANK FARM

IMPORTING & EXPORTING EXCELLENCE



“

WE ARE PROUD TO
INVEST IN THE
NCPM
BECAUSE IT MEANS
WE'RE INVESTING IN
YOUNG PEOPLE AND
IN THE FUTURE OF
BRITISH INDUSTRY.

JOHN REYNOLDS
REYNOLDS TRAINING SERVICES

Experience the full range of import and export operations, including receipt and delivery by:

- ◆ SHIP
- ◆ ROAD
- ◆ RAIL
- ◆ TANK TO TANK (INTERNAL)
- ◆ TANK TO TANK (EXTERNAL)

The Tank Farm's impressive system consists of tanks, pumps and pipes, filters, meters and valves which have been designed and arranged to allow for transferring liquids internally and externally, reproducing the exchanges that happen in Process and Storage facilities worldwide.

LEARNING **BENEFITS:**

Field operators get genuine hands-on experience of arranging, checking and monitoring this flow, while controllers get experience of employing different computer-controlled systems, balanced with the human interaction of liaising with the field operators, whilst also coordinating with supervisors and managers and other process plants.

THE TANKS

Our impressive Tank Farm system consists of a range of SIL-rated equipment, including tanks, pumps, pipes, filters, meters and radar, as well as servo gauges with independent high-level sensors linked through to a Remotely Operated Shut Off Valve (ROSOV).

Readout from the respective gauges is fed to the Control Room and also displayed on multi functional gauges within the Tank Farm, while control is achieved via either the Emerson Delta V or Honeywell Experion Distribution Control Systems.

This has all been designed to allow for transferring liquids internally and externally emulating road, rail and shipping as well as internal or external pipeline transfers, reproducing the exchanges that happen in Process and Storage facilities worldwide.



Honeywell
Smart Servo 954



Honeywell **990**
FlexLine Radar Gauge

RECEIPT & DISCHARGE



Receipt & Discharge Point

Our Receipt & Discharge Point can receive raw material from a road or rail tanker, a pipeline or a ship and transfer that material into any of our tanks.

The material can be transferred into the Process Building for refining – and then be piped back to any tank in our Tank Farm, before being exported to a road or rail tanker, pipeline or ship.

Honeywell Multi Stream Controller – Loading (MSC-L)

The fully-metered system is the very latest multi-stage metering process, with the ability to control a range of loading arms at the Receipt and Discharge Point.



Five-way Pipe Interchange

Our Five-way Pipe Interchange represents different types of receipt and delivery operations:

1. Shipping
2. Tank-to-tank
3. External Pipeline
4. Road Loading
5. Rail Loading

These can all connect to metered and unmetered routes through a range of valves and filters and incorporating our industry standard Coriolis Mass Flow Meter – all routes protected by the Remotely Operated Shut Off Valve (ROSOV).

Flow Metering and Regulation

The Coriolis Mass Flow Meter is designed for the direct measurement of mass flow rate, product density and product temperature.

Flow is regulated through this meter utilising a Brodie B88 Digital Control Valve (DCV) providing precise flow rate control and batch delivery, reducing the danger of potential damage caused by sudden high flow start and stop processes.

CORIOLIS MASS FLOW METER



BRODIE B88 DIGITAL CONTROL VALVE (DCV)

EMULATED WORK ENVIRONMENT

PROCESS BUILDING

GROUND FLOOR

PROCESS PUMPS AND VESSELS

FIRST FLOOR

PROCESS VESSELS

TOP FLOOR

HEAT EXCHANGERS

Our impressive training facility features a three-storey live Process Building, this contains process storage vessels connected to the Tank Farm by pumps and pipelines that function exactly as in any process plant.

This extends our process operation across a range of technical areas, enhancing the learning experience and the development of important real world skills.

LEARNING **BENEFITS:**

True to a real life operational site, learners must follow full site operational procedures including PPE, ER and core process plant start up, steady-state running and shut down, all while working alongside other trades including maintenance and contractor personnel.

All of this is essential for learners to get real world hands-on experience of operating a plant. The more familiar they are with plant operations, the safer and more efficient they will be in the work environment.



THREE FLOORS OF REAL WORLD TRAINING

PROCESS BUILDING

GROUND FLOOR

Process Pumps And Vessels

This area comprises a wide range of equipment from filters, pumps and process receipt-and-distribution vessels, to compressors, automated valves and pipework.

Products can be transferred into and out of the Process Building, supervised by the field operator who liaises directly with the control room operator, ensuring that the relevant proportions in the blending and processing operation are correctly controlled.

FIRST FLOOR

Process Vessels

Here we have access to a range of process vessels and pipework enabling the monitoring of transfer and process operations both internally and externally, ensuring these are maintained at optimal condition.

SECOND FLOOR

Heat Exchangers

This floor provides a range of heat exchangers, water tanks and sampling areas. Process can be monitored for quality and compliance within key parameters, while this information is also fed back to the Control Room to the Emerson Delta V Distribution Control System.

WWW.NCPM.UK

PROCESS BUILDING

Going with the flow - Raw material from the Tank Farm is transferred into the Process Building, and can be directed through a range of process operations – emulating site based activities that are found in many process facilities.

These operations are handled solely via the Emerson Delta V through the reactor feed tanks, heat exchangers and reactor loops, whilst sampling and manual dosing can also be undertaken.

The finished product is then fed back out to the Tank Farm, for export via road, rail, pipeline, or ship.

SECOND FLOOR

7. HEATING ELEMENT

Supports the heat exchangers by utilising an immersion thermostatically controlled hot water tank arrangement. This enables wider emulation of typical process operations.

8. HEAT EXCHANGER

These modify the processes that are being undertaken elsewhere in the process building.



FIRST FLOOR

6. REGULATING VALVES

These valves control the flow of material around the process building as well as back out to the Tank Farm.

5. SAMPLING RIG

Here we can conduct sampling activities, which are essential for quality control.

4. PROCESS VESSEL

The vessel has associated automated level control, localised and remote (transmitted) indication for both level and temperature and incorporates an independent high level trip with redundancy.



GROUND FLOOR

1. RECEIPT VESSEL

Material from the Tank Farm arrives in the Process Building at this point.

2. TRANSFER PUMPS

These pumps transfer the material internally through various routes and various process vessels, or externally back to the Tank Farm.

3. PROCESS VESSEL

A range of processes can be conducted within this vessel, then the material can be transferred onwards for other processes.





OPERATIONAL CONTROL CENTRE

THE COMMUNICATION SUITE

The Operational Control Centre is the hub of operational control for process operations at the NCPM. It provides a suite of rooms ensuring safety is at the core of process.

The suite of rooms in the Operational Control Centre are divided into three core areas:

1. Operation Reception and Control - Ensuring all personnel are managed onsite and that operations, maintenance and visitors are inducted and have the appropriate documentation before carrying out their tasks.

2. Switch Room - With access only by authorised personnel, this area fully emulates power distribution and control ensuring that electrical safety is maintained through appropriate lock out and tag out.

3. Control Room - This room houses the two Distribution Control Systems (DCS):

◆ **Emerson Delta V**

◆ **Honeywell Experion**

The four screen display of the Honeywell Experion system provides optimum command and control

of the Tank Farm and associated import and export systems, while the Emerson Delta V ensures safety within the Process Building and associated systems.

Uniquely within a training environment, the two Distribution Control Systems can work in tandem with each other providing optimal control mixed with a wide range of complexity within process operations.

Control of the Delta V can also be transferred to the Simulator Suite, providing complete separation of the two operational teams and adding to the human factor issues that can be brought about within communication and control.

LEARNING BENEFITS:

The Operational Control Centre enables the development of safety and safety culture across all levels within operations and maintenance, from supervisory through to control room and field operations. It reflects the reality of communication in process operations within high hazard environments.

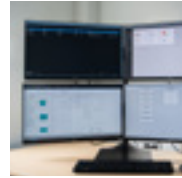


With two Distribution Control Systems that can work simultaneously, the NCPM can offer unrivalled training delivering a depth of complexity across a wide range of scenarios, embedding prevention and mitigation techniques within operational and maintenance activities.

JOHN REYNOLDS
REYNOLDS TRAINING SERVICES

CONTROL ROOM

CATCH Managed Switch

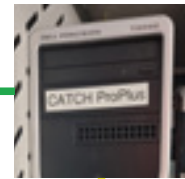


Honeywell
Experion Client

Remote Shield



Delta V Pro +



Internet / Secure
Cloud



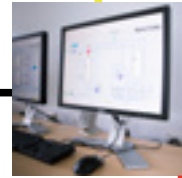
CIU888



Controledge
PLC



HC900 PLC



Emerson
Delta V

TANK FARM



Honeywell MSC-L

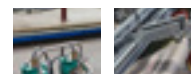
Metering Route
Instruments



Earthing



MonoBlock Injector



DCV



Coriolis

Tank Radar
Instruments



Servo



HART



Vito 762



Radar

General Valves
& Instruments



ROSOV &
Actuator



SLG



Actuated
Switch Valve



Centrifugal
Pump

PROCESS BUILDING



General Valves &
Instruments

SYSTEM ARCHITECTURE

Experion Server



TRAINING OFFICE

CATCH Managed Switch



SIMULATOR SUITE

- Other
- Modbus TCP / IP
- DeltaV Primary / Secondary
- Fibre Optic
- Foundation Fieldbus
- Instrument Wiring

KEY

DISTRIBUTION CONTROL SYSTEMS



Process operations at the NCPM are controlled through two Distribution Control Systems (DCS).

These systems can be operated independently within separate control room environments or can equally work in tandem supporting real world import, export, and processing operations across a wide range of scenarios; from raw product receipt, through processing and export of finished products via pipeline, ship or road.

The independence of the systems heightens the importance of personal communication between operators, enabling us to emulate the complexities that can be brought about when transferring between two independent locations. This embeds the skills of clear, concise communication for operational, maintenance and supervisory roles.



We've added an immense layer of complexity to the site and we can now bring in any scenario reflecting real world hazards. There's no limit to what we can do!

JOHN REYNOLDS
REYNOLDS TRAINING SERVICES



EMERSON DELTA V

This provides control from the Tank Farm through to the Process Building, with clear graphical interfaces enabling operations personnel to undertake a range of complex routines.

Operations can be executed within the Control Room or transferred to the Simulator Suite, providing remote operation and bringing greater reliance on field operators and maintenance teams.



HONEYWELL EXPERION

We have invested in a system that provides remote access to both Experion and Delta V, enabling us to bring elements of our knowledge to your site.

With this capability, we are able to remotely deliver a range of operational knowledge relevant to the Honeywell or Emerson DCS. We can also provide hands-on experience for operational personnel before they attend practical training at the NCPM.

DAVID TALBOT
CATCH



It is crucially important that learners master state-of-the-art systems like this, as they are exactly the kind of DCS they will encounter in industry.

THE SIMULATOR SUITE

The Simulator Suite is a multifunction environment, providing replication of high hazard industrial operational process and emergency response conditions.



1

Transfer real time operation of the Emerson Delta V to this room, providing independent control of operations.

2

Observe and assess operational decisions and actions from a separate room, where scenarios can be expanded to further test learners' operational and emergency responses, as situations develop in real time.

3

Simulate critical operational scenarios utilising a multifunctional simulator within a Control Room Environment. This heightens the pressure within the potentially intense environment of the high hazard sector.

LEARNING **BENEFITS:**

The Simulator Suite allows us to replicate real immersive experiences. The simulated scenarios help learners develop decision-making and team-working competencies as well as communication skills.

SAFETY IS A MATTER OF COURSE

The NCPM enables Reynolds Training Services and CATCH to expand their training horizons to bring the benefits of real world, hands-on experience in a state-of-the-art facility.

Our range of courses is expansive, however it is not just about what we can do - but also how we can work with you to deliver the knowledge, skills and experience that will take your operational performance to the next level.

COURSES **INCLUDE:**

AWARDING BODY	COURSE TITLE	LENGTH OF COURSE
CATCH	Loss of Containment	1 Day
CATCH	Intro into Process Plant Operations	5 Days
ECITB	Mechanical Joint Integrity	1 Day
ECITB	Small Bore Tubing	2 Days
GQA	Bulk Liquid Operations Knowledge Workshop	5 Days
GQA	Bulk Storage Operator Technician Knowledge Workshop	10 Days
GQA	Diploma in Performing Process Plant Operations within a Replicated Environment	15 Days

IOSH APPROVED	Principles and Practice of HAZOP	2 Days
IOSH APPROVED	Principles and Practice of Control of Work	2 Days
IOSH APPROVED	Process Safety Awareness	1 Day
IOSH APPROVED	Principles and Practice of Emergency Response	2 Days
NEBOSH	Certificate in Process Safety Management	5 Days
NEBOSH	ITC in Oil and Gas Operational Safety	5 Days
REYNOLDS	BPCS/DCS - Control Room Operations in a Replicated Environment	10 Days
REYNOLDS	Principles and Practice of Import and Export of Products by Road Vehicle	2 Days
REYNOLDS	Principles of COMAH 2015 in the Process Industries	1 Day
REYNOLDS	Principles and Practice of Procedure Writing	2 Days



TRAINING AT THE NCPM

Here at the NCPM we are ready to assist you with your training requirements!



INFO@NCPM.UK



WWW.NCPM.UK



01469 552885

OUR REAL WORLD APPRENTICESHIPS

BUILDING A TECHNICAL WORKFORCE FOR THE FUTURE

To ensure a continuity of supply, in a safe and predictable way - across all sectors - we need to mould the next generation, from the very start, into fantastic operators who can see the big picture, understand the responsibilities and opportunities their roles entail and then progress upwards in their

successful careers - whilst passing on their skills to yet another generation. This is how we create a circular culture of competency for our industries. This competency must be ingrained into every inch of a site, from boardroom to cleaning cupboard, from personal safety to process safety.

Reynolds Training Services and Apprenticeships

Reynolds Training Services worked in conjunction with the TSA (Tank Storage Association), Cogent and The OPA (Oil & Pipelines Agency) in developing the 'Bulk Liquid Terminal Technician Specialism'. This then gained approval from industry for use with the 'Science Manufacturing Technician Apprenticeship Standard'. In a drive to further underpin this apprenticeship and specialism, Reynolds Training Services developed a new 'Level 3 Qualification: Bulk Storage Operator Technician', providing a route to technical recognition for the sector. It gives a wider focus on process and occupational safety, human factors and emergency response, aligning this with technical operations.

Early investment enables us, at the NCPM, to embrace talented people, embedding the knowledge, skills and experience needed to sustain and expand safe operations. The 30-month apprenticeship involves a mixture of classroom-based training and learning practical assessment at our emulated training facility, CATCH, along with onsite training and competency assessment at the candidate's actual workplace.

As the next generation takes the helm of industry, there's an opportunity for the NCPM to help reshape the future by deeply embedding newer, safer, more efficient processes into the mindsets of individuals and teams and, through them, to spread that best practice through the whole of the UK's and the world's Bulk Storage and High Hazard Process Industries.

CATCH and Apprenticeships

Since its inception in 2006, the CATCH facility has been home to the Process Operations Apprenticeship with over 250 apprentices training and progressing into industry. The NCPM gives us the ability to have Science Manufacturing Technician apprentices working alongside Bulk Storage Operator Technician apprentices whilst interacting with Engineering Maintenance apprentices on live plant based tasks.

The NCPM is industries' leading Operations Apprenticeship training facility, with an aim to attract additional employers from national and international regions to experience the fully-contextualised process operations and maintenance training environment.



INDUSTRIAL SECTORS

WE SERVE, KEEP SAFE, HELP GROW

At the NCPM, the partnership of Reynolds Training Services and CATCH allows us to offer a comprehensive suite of apprenticeships and upskilling courses for a wide range of industries and business sectors including process manufacturing, bulk storage, petro-chemical, oil & gas, pharmaceutical and many more.

Throughout the entire high hazard sector, we cannot take our eye off the ongoing need to continue delivering services in the safest of environments, underpinned by skilled and competent operational and maintenance teams.



**SUPPORTING
INDUSTRY
ACROSS
MULTIPLE
SUPPLY
CHAINS IS
WHAT WE
DO BEST**

JOHN REYNOLDS
REYNOLDS TRAINING SERVICES

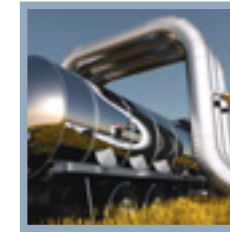
Our advanced safety and technical training means the NCPM is creating careers in everything from control & instrumentation to process and occupational safety, as well as management and quality control. This puts the NCPM at the core of a wide range of industrial sectors.



**BULK
STORAGE**



**OIL & GAS
DISTRIBUTION**



**CHEMICALS &
PHARMACEUTICALS**



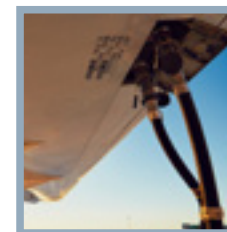
**PROCESS
MANUFACTURING**



REFINERIES



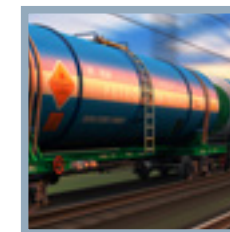
LOGISTICS



AVIATION



**FUEL
DISTRIBUTION**



RAIL



**POWER
GENERATION**



WWW.NCPM.UK

FACILITIES AT CATCH

A COMPLETE SERVICE

The NCPM is based at the CATCH facility in Stallingborough, where the existing facilities complement the new partnership between CATCH and Reynolds Training Services, enabling the NCPM to enhance your learning experience like never before.

Classroom tuition is just as important as hands-on onsite training, which is why our training rooms provide the perfect environment to learn all the theory and regulations that underpin process safety.



ROOMS

The modern classrooms, which cater for groups of six to forty learners, are temperature controlled and provide a comfortable environment for theory based learning.



AMENITIES

Coffee and refreshments are available onsite. We can also provide a range of hot and cold meals to keep your tanks topped up during the course.



PARKING

Free onsite car parking is available and, for the cyclists among us, secure your ride in the bike park.



Our location at Stallingborough in Lincolnshire features excellent travel links. We are convenient for the A180 and M180 - which connects directly with the M18 and the M1.

We're less than 15 minutes from Humberside Airport and less than half an hour from The Humber Bridge.

For learners who stay, there is a wealth of accommodation throughout the area and we are conveniently located for the cities of Hull and Lincoln as well as the towns of Great Grimsby, Cleethorpes and Scunthorpe.



THE NCPM AT A GLANCE

A REYNOLDS TRAINING SERVICES & CATCH STRATEGIC PARTNERSHIP

Individually unique, collectively experienced

The National Centre for Process & Manufacturing is changing the way people learn.

The partnership between Reynolds Training Services and CATCH further cements our joint commitment to providing exceptional training in the high hazard industrial environment.

Our decades of experience in industrial training is woven into the very fabric of everything we do at the NCPM.

We're excited to play our part in training young people, as well as reskilling and upskilling experienced adults; all to provide a qualified workforce for our industries' future.

What is the NCPM?

Specifically, our Tank Farm and Process Building offer an emulated environment for transferring, processing and storing bulk liquids, while Receipt and Discharge can replicate a wide range of operations including road, external and internal pipeline, ship and rail transfers, allowing discharge of raw material into any of our tanks, through an array of pipes, actuated and switched valves.

The material can be metered, filtered, stored and transferred into the Process Building for processing. It can then be transferred back to any tank in our Tank Farm and, ultimately, delivered to a waiting vehicle, ship, train or transferred out via external pipeline.

That's a real time operation, emulating the whole process life-cycle from raw material to finished product. The cutting-edge equipment and associated controls we offer at the NCPM align directly with a range of industries within the UK and internationally.

The NCPM is a national centre with an international reach. This is the UK's only full-scale operational training facility.

DAVID TALBOT
CATCH

The creation of the NCPM takes training for the Process Industries and associated sectors to the next level!

JOHN REYNOLDS
REYNOLDS TRAINING SERVICES

What do we do?

Bulk liquid storage and processing is essential to the health and welfare of the country.

Fuel, food and chemicals are the lifeblood of our society and - by storing, importing, exporting and distributing them - we are keeping the economy alive.

At the NCPM, we ensure that our trainees are fully-prepared to take on the responsibilities of keeping the wheels of industry turning safely and efficiently.

That is why we offer advanced safety training for careers across operations, maintenance, control & instrumentation, process and occupational safety, management and quality control.

Who are we?



Reynolds Training Services is accredited by the world's leading awarding bodies to run a range of globally-recognised health and safety courses and technical qualifications. We also bring the same skills and experience to our own range of bespoke courses.

CATCH is an industry led partnership offering state-of-the-art facilities and versatile training rooms. We bring together industry and training providers to facilitate the very best health and safety training and assessment.

Our focus is very much on developing contextualised training in a live operational environment.

We offer an up-to-date real world learning environment in which learners can develop the competencies needed to operate safely and efficiently in a high-hazard environment.



WHERE ARE WE HEADING NEXT?



DAVID TALBOT
CO-CREATOR OF THE NCPM

There is no better training available for a safe and secure career in the high hazard sector - including process manufacturing, bulk storage, petro-chemicals, oil & gas or pharmaceuticals.



JOHN REYNOLDS
CO-CREATOR OF THE NCPM

The continued investment in the NCPM facilities by both CATCH and Reynolds Training Services means that we are one giant leap closer to cementing our vision to be a national skills centre and technical services hub for energy intensive and energy producing industries in the clean growth era.

We are thrilled to contribute towards The National Centre for Process & Manufacturing through our allocation of the Local Growth Fund. This new facility will enable more learners to access high quality training, focused specifically on the chemicals and renewables sector, in an environment that mirrors conditions in industrial settings. This will benefit many across the Humber area, who wish to develop their skills in this important sector.

STEPHEN PARNABY OBE
CHAIR OF THE HUMBER LEP



**THE NCPM
WAS REALISED
DUE TO A
£250,000
INVESTMENT**

FROM
REYNOLDS TRAINING SERVICES



**THE NCPM HAS BEEN
SUPPORTED WITH
£195,000
FROM THE GOVERNMENT'S
LOCAL GROWTH FUND,
SECURED BY THE HUMBER LEP
AS PART OF THE GOVERNMENT'S
COMMITMENT TO THE
NORTHERN POWERHOUSE.**





TRAINING AT **THE NCPM**

At the NCPM we offer the widest variety of courses offering Training and Competency Assessment for the high hazard process and manufacturing industries. We work with you to ensure we exceed expectations, so contact us to get started...

National Centre For Process & Manufacturing,
CATCH Facility
Redwood Park Estate
Stallingborough
North East Lincolnshire
DN41 8TH



INFO@**NCPM.UK**



WWW.**NCPM.UK**



01469 **552885**